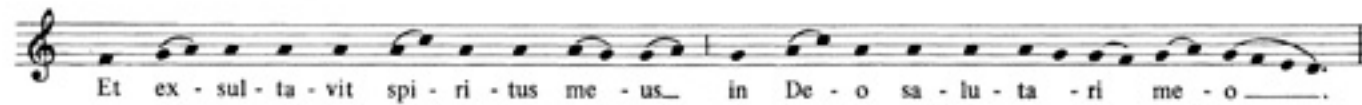


# 1. Magnificat I. Toni



[1.VERSUS]

The piano accompaniment is written in common time (C) and consists of three systems of grand staff notation. Each system includes a treble clef staff and a bass clef staff. The first system begins with a whole rest in the bass clef and a chord in the treble clef. The second system starts at measure 8 and features a more active treble line with eighth and sixteenth notes, while the bass line remains mostly stationary with some movement. The third system starts at measure 16 and continues the melodic development in the treble, with the bass line providing harmonic support through sustained notes and occasional movement.