

Trompete und Trommel

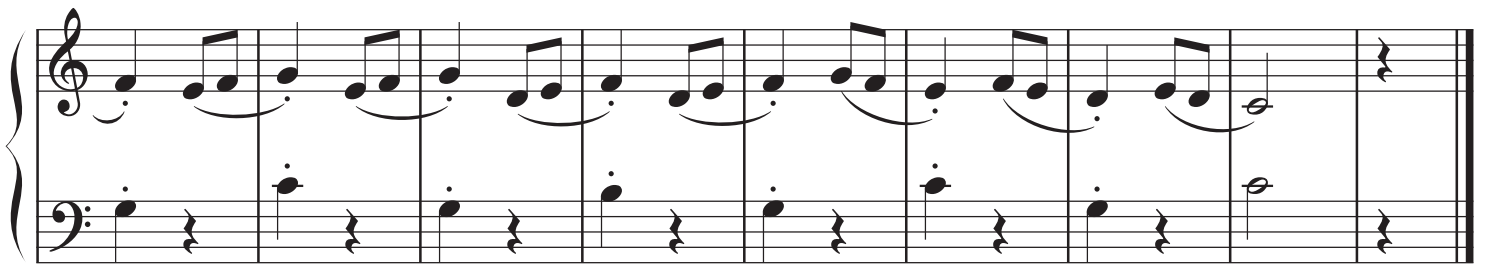
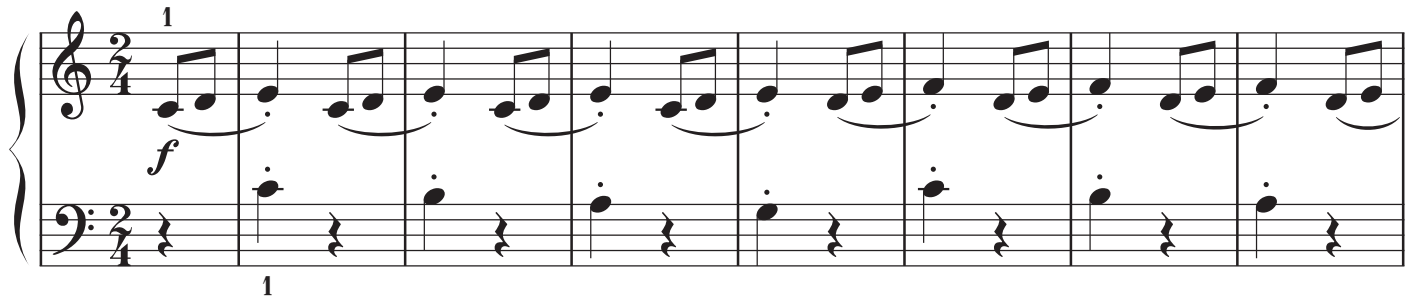
Trumpet and Drum

✘ = auf den Klavierdeckel klopfen
tap on the piano lid



Galopp

Gallop



Der Wasserhahn tropft

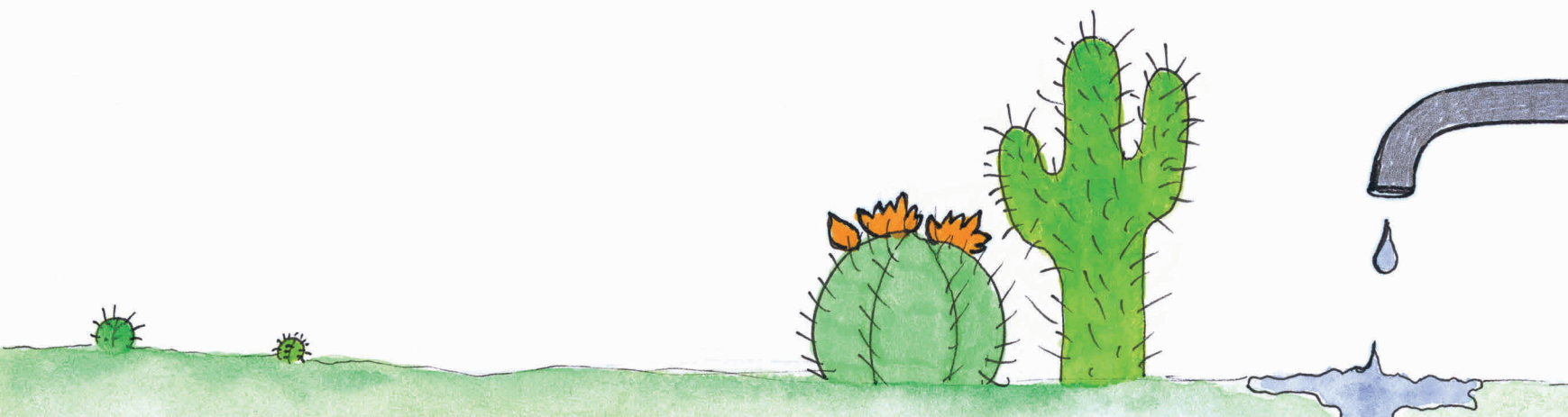
The Water Tap is Dripping



Leseprobe



Sample page.



Fuchs, gib acht!

Fox, watch out!



Leseprobe



1 3 5

= klatsche
clap

Sample page

