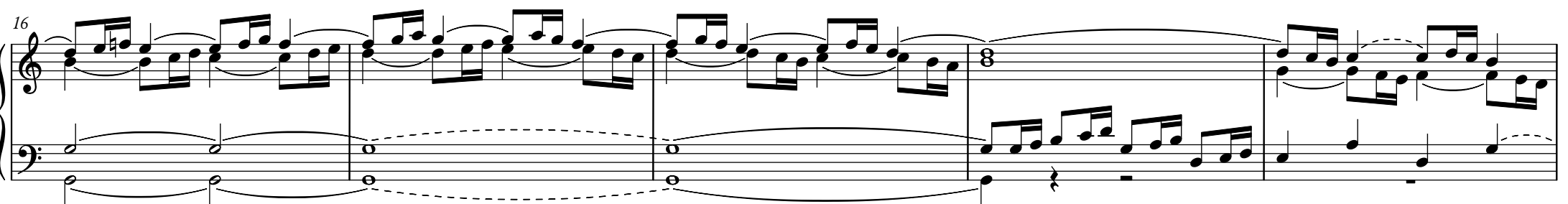


Fantasia in C

BWV 570



21

Musical notation for measures 21-25, featuring a treble and bass clef with various notes and rests.

26

Musical notation for measures 26-29, featuring a treble and bass clef with various notes and rests.

30

Musical notation for measures 30-33, featuring a treble and bass clef with various notes and rests.



34

Leseprobe

Musical notation for measures 34-37, featuring a treble and bass clef with various notes and rests.

38

Musical notation for measures 38-41, featuring a treble and bass clef with various notes and rests.

Fantasia in c

BWV 1121

Adagio

Musical notation for measures 1-6 of Fantasia in C major, BWV 1121. The score is in 6/4 time and features a treble and bass clef with a key signature of one flat. The music is in a slow, adagio tempo.

Musical notation for measures 7-12 of Fantasia in C major, BWV 1121. The score continues with the same notation as the previous system.



Musical notation for measures 13-18 of Fantasia in C major, BWV 1121. The score continues with the same notation as the previous systems.

Leseprobe

Musical notation for measures 19-24 of Fantasia in C major, BWV 1121. The score continues with the same notation as the previous systems.

25

Musical notation for measures 25-30, featuring a treble and bass clef with various notes and rests.

31

Musical notation for measures 31-36, featuring a treble and bass clef with various notes and rests.

37

Musical notation for measures 37-42, featuring a treble and bass clef with various notes and rests.



43

Leseprobe

Musical notation for measures 43-48, featuring a treble and bass clef with various notes and rests.

49

Musical notation for measures 49-54, featuring a treble and bass clef with various notes and rests.